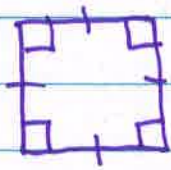


M5L19-20 Attributes of Quadrilaterals

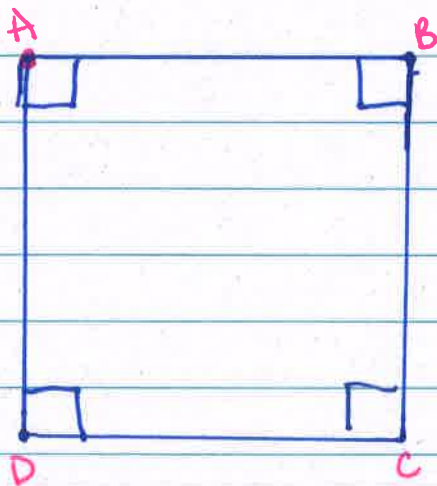
4.10.19



Square:

- ~ all 4 sides (quadrilateral) are equal (rhombus)
- ~ all 4 angles (quadrilateral) are 90° (rectangle)

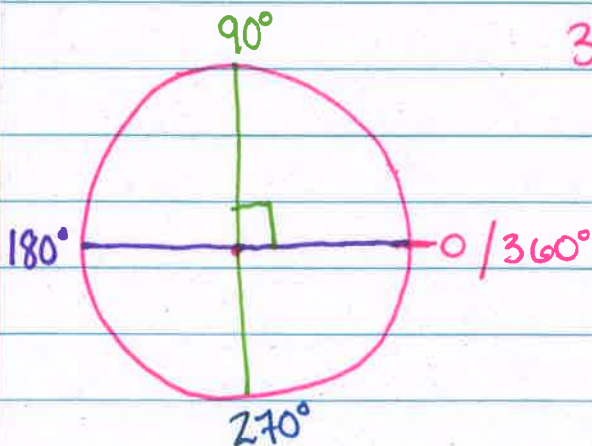
Quadrilateral \rightarrow Trapezoid \rightarrow Parallelogram \rightarrow
Rhombus / Rectangle \rightarrow Square



$\overline{AB} \parallel \overline{DC}$ (parallel)

$\overline{AD} \parallel \overline{BC}$ (parallel)

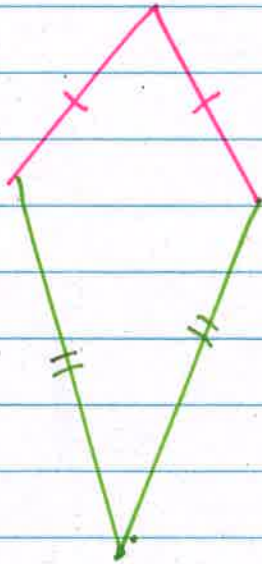
$\overline{AD} \perp \overline{DC}$ (perpendicular)



Right Angle / Perpendicular = 90°

Kite

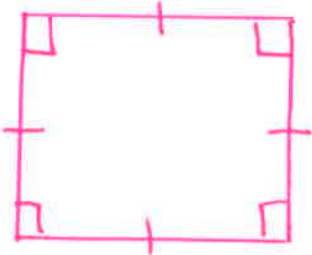
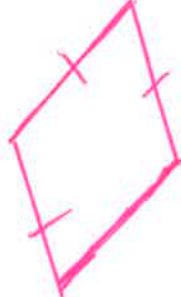
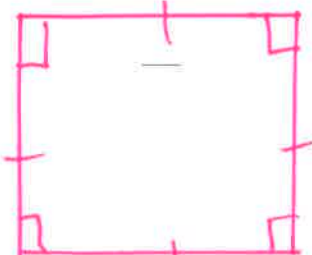
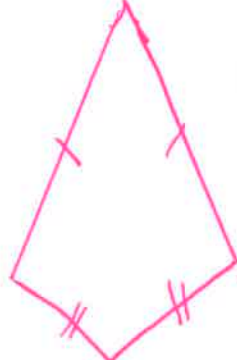
- a quadrilateral in which 2 consecutive sides have equal lengths.
- two remaining sides have equal length.



Name _____

Date _____

1. Draw the figures in each box with the attributes listed. If your figure has more than one name, write it in the box.

<p>a. Rhombus with 2 right angles</p>  <p>rhombus, square, Kite, rectangle, parallelogram, trapezoid, quadrilateral</p>	<p>b. Kite with all sides equal</p>  <p>Kite rhombus parallelogram trapezoid quadrilateral</p>
<p>c. Kite with 4 right angles</p>  <p>square, kite, rhombus, rectangle, parallelogram, trapezoid, quadrilateral</p>	<p>d. Kite with 2 pairs of adjacent sides equal (The pairs are not equal to each other.)</p>  <p>Kite quadrilateral</p>

2. Use the figures you drew to complete the tasks below.

- Measure the angles of the figures with your protractor, and record the measurements on the figures.
- Use a marker or crayon to circle pairs of angles that are equal in measure, inside each figure. Use a different color for each pair.

Name _____

Date _____

1. True or false. If the statement is false, rewrite it to make it true.

	T	F
a. All trapezoids are quadrilaterals.	✓	
b. All parallelograms are rhombuses. <i>Some parallelograms are rhombuses</i>		✓
c. All squares are trapezoids.	✓	
d. All rectangles are squares. <i>All squares are rectangles</i>		✓
e. Rectangles are always parallelograms.	✓	
f. All parallelograms are trapezoids.	✓	
g. All rhombuses are rectangles. <i>Some rhombuses are rectangles</i>		✓
h. Kites are never rhombuses. <i>Kites are sometimes rhombuses</i>		✓
i. All squares are kites.	✓	
j. All kites are squares. <i>Some kites are squares</i>		✓
k. All rhombuses are squares. <i>All squares are rhombus</i>		✓