

M3.L8. Adding/Subtracting Fraction, Mixed Numbers

AP:

Jane spent $\frac{3}{20}$ of her money on candy

1 - 1 whole = all her money		
$\frac{1}{4}$	$\frac{3}{5}$?
cm	m	c

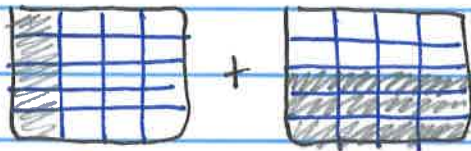
$$1 - \left(\frac{1}{4} + \frac{3}{5}\right)$$

$$1 - \frac{17}{20}$$

$$\frac{1}{4} + \frac{3}{5}$$

$$\frac{20}{20} - \frac{17}{20}$$

$$\frac{3}{20}$$



$$\frac{5}{20} + \frac{12}{20} = \frac{17}{20}$$

Fluency

Addition: $3\frac{1}{2} = 3 + \frac{1}{2}$

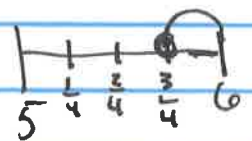
$$\begin{array}{r} 3 \\ + \frac{1}{2} \end{array}$$

Subtraction:

$$1 - \frac{1}{2} = \frac{1}{2}$$

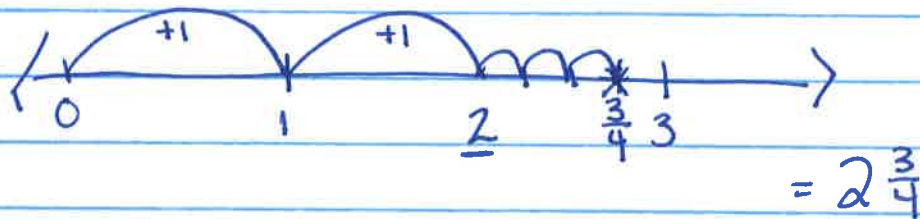
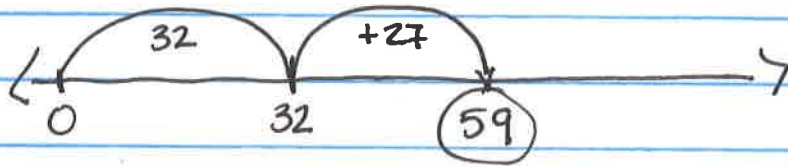
$$2\frac{1}{2} - \frac{1}{2}$$

$$6 - \frac{3}{4}$$

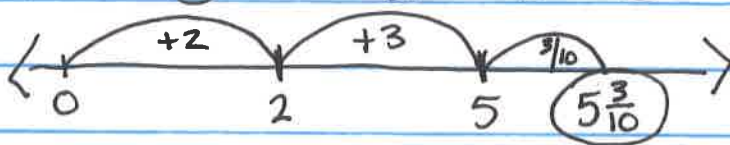


M3.L8

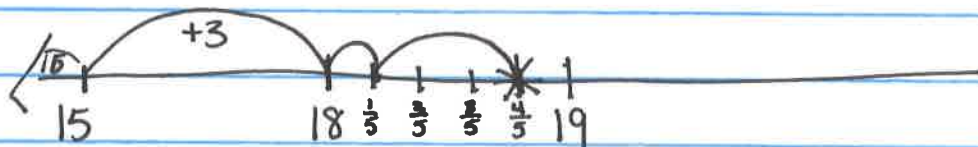
Adding: $32 + 27 = 59$



$$2\frac{3}{10} + 3 = 2 + \frac{3}{10} + 3$$



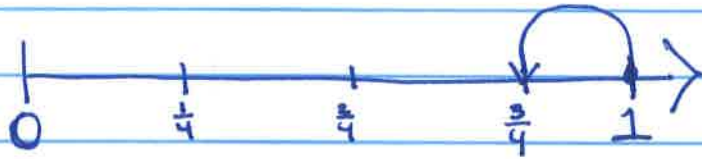
$$15\frac{1}{5} + 3\frac{3}{5} =$$



$$18\frac{4}{5}$$

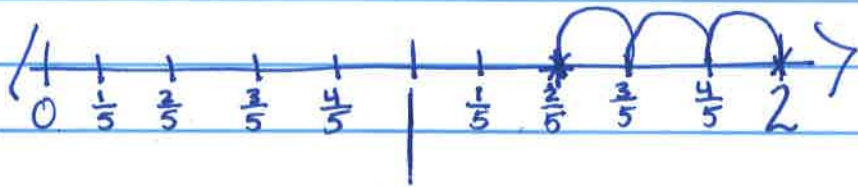
Subtraction

$$1 - \frac{1}{4}$$



$$= \frac{3}{4}$$

$$2 - \frac{3}{5}$$



$$1\frac{2}{5}$$

$$3 - 1\frac{2}{3}$$

