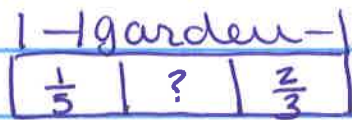


M3.L7 - Word Problems

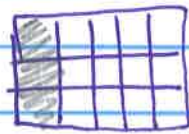
1. Summer needed $\frac{2}{3}$ of the garden



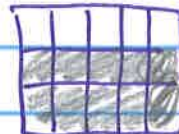
George Summer LO

$$\frac{1}{5} + \frac{2}{3}$$

$$| - \frac{13}{15}$$



+



$$\frac{3}{5}$$

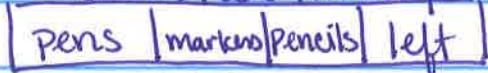
+

$$\frac{10}{15} = \frac{13}{15}$$

$$\frac{15}{15} - \frac{13}{15} = \frac{2}{15}$$

2. Jing has $\frac{1}{24}$ money left over.

1- all her money -



$$\frac{1}{3} + \frac{1}{2} + \frac{1}{8} \quad ?$$

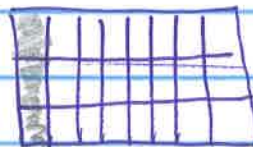
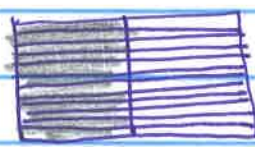
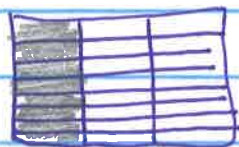
$$| - \frac{23}{24}$$

$$\frac{24}{24} - \frac{23}{24} = \frac{1}{24}$$

$$\frac{1}{3}$$

$$\frac{1}{2}$$

$$\frac{1}{8}$$



$$\frac{8}{24}$$

+

$$\frac{12}{24}$$

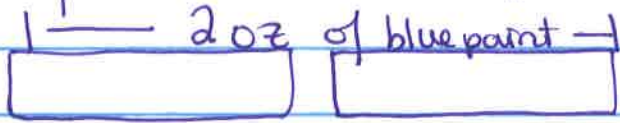
+

$$\frac{3}{24}$$

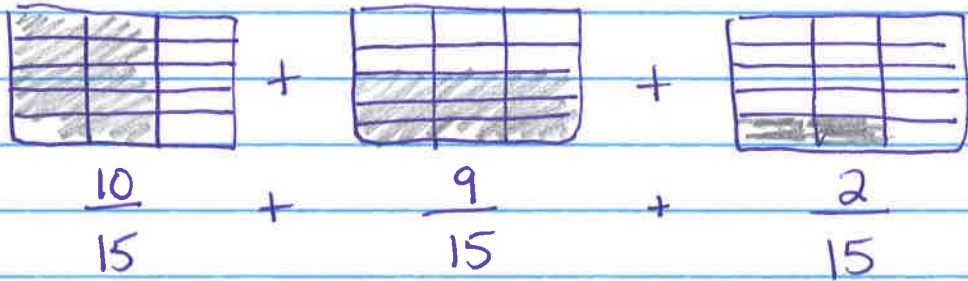
$$= \frac{23}{24}$$

3.

Shelby used $\frac{3}{5}$ oz to paint her flag



$$\frac{2}{3} + \frac{3}{5} + \frac{2}{15}$$

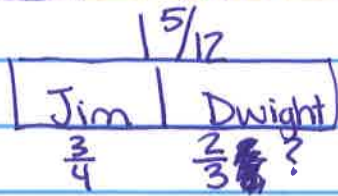


$$2 - \frac{21}{15}$$

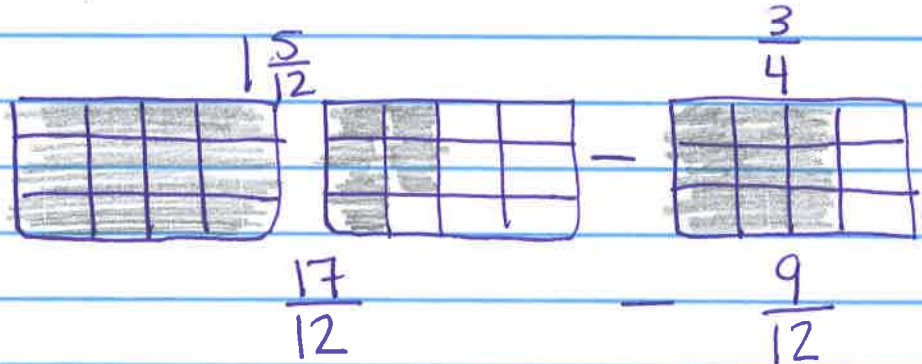
$$\frac{30}{15} - \frac{21}{15} = \frac{9}{15} \stackrel{\div 3}{=} \frac{3}{5}$$

4.

Jim sold $\frac{1}{12}$ gal more lemonade.



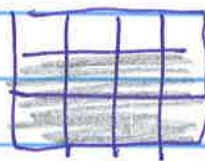
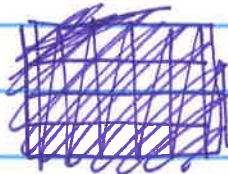
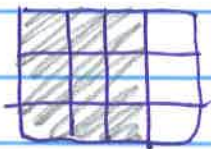
$$\frac{5}{12} - \frac{3}{4}$$



$$\frac{3}{4}$$

$$\frac{2}{3}$$

$$\frac{8 \div 4}{12 \div 4} = \frac{2}{3}$$



$$\frac{9}{12}$$

$$\frac{8}{12}$$

$$= \frac{1}{12}$$

5

Leonard spent $\frac{1}{8}$ of his money on comic books



$$\frac{2}{8} = \frac{1}{4} \quad \frac{3}{8}$$