

M3.L5/6 - Subtracting Fractions

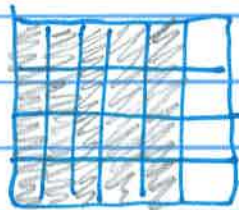
AP

The container weighs $1\frac{7}{12}$ Kg

B#1 $\boxed{X|X|X|X|X} = 5/6$ Kg } ?

B#2 $\boxed{X|X|X| } = 3/4$ Kg }

$$\frac{5}{6} + \frac{3}{4}$$

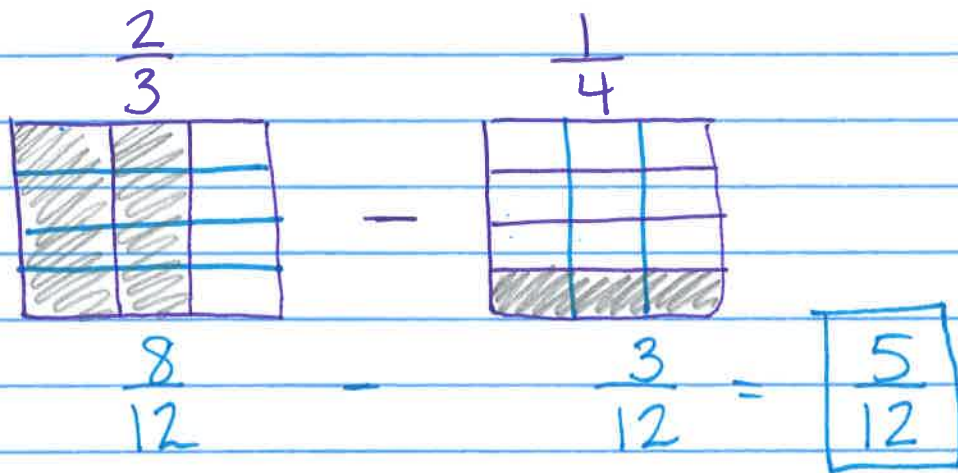


$$\frac{20}{24} + \frac{18}{24}$$

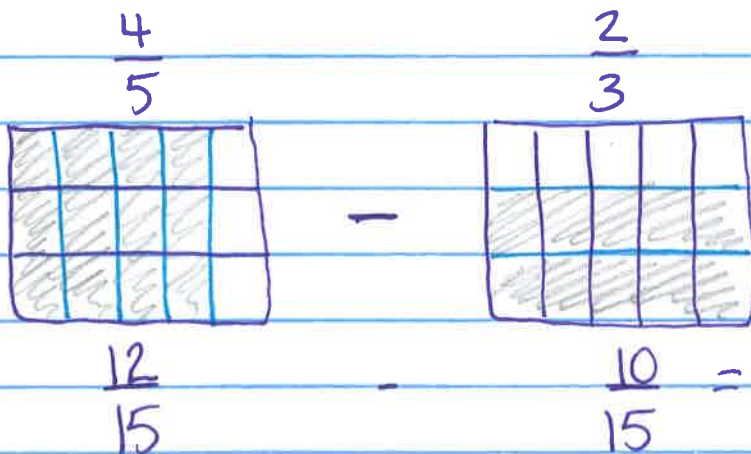
$$\frac{38}{24} = \frac{24}{24} + \frac{14}{24} = \frac{14}{24} \div 2 = \frac{7}{12}$$

M3·L5/6 - Subtracting Fractions

$$\frac{2}{3} - \frac{1}{4} =$$

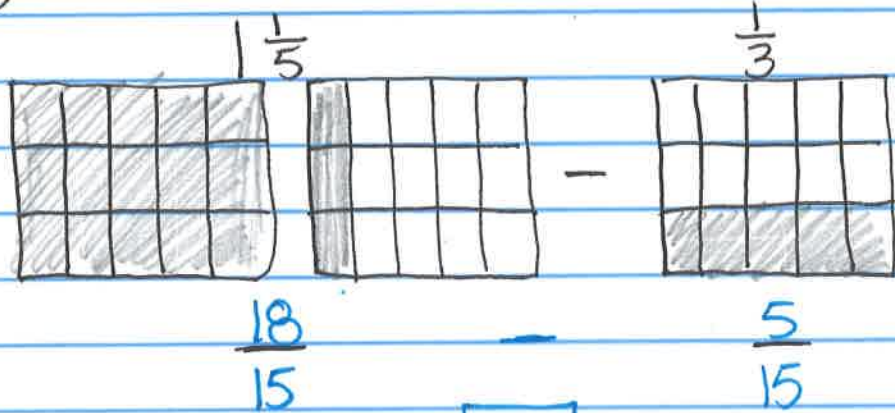


$$\frac{4}{5} - \frac{2}{3} =$$



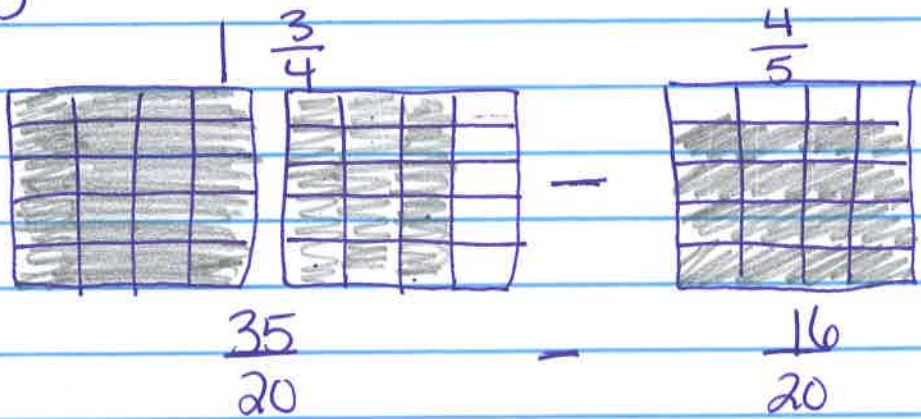
$$\boxed{\frac{2}{15}}$$

$$\left| \frac{1}{5} - \frac{1}{3} \right.$$



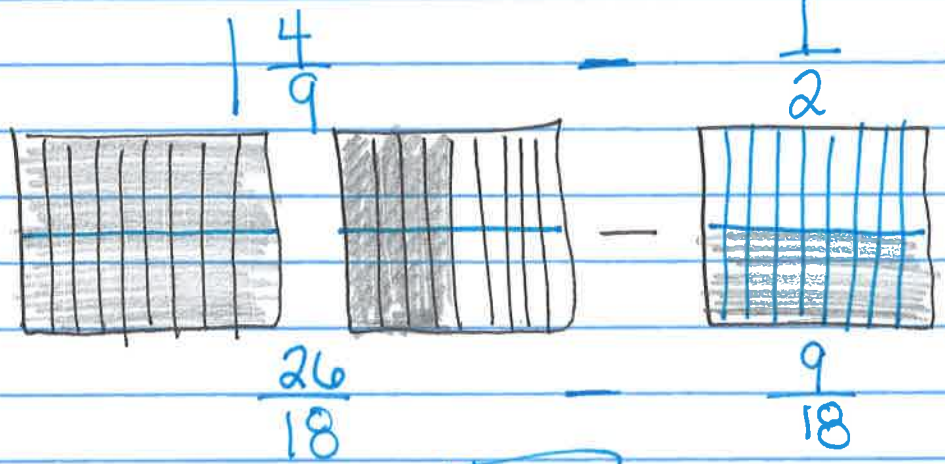
$$\frac{13}{15}$$

$$\left| \frac{3}{4} - \frac{4}{5} \right.$$



$$\frac{19}{20}$$

$$\frac{4}{9} - \frac{1}{2}$$



$$\frac{17}{18}$$